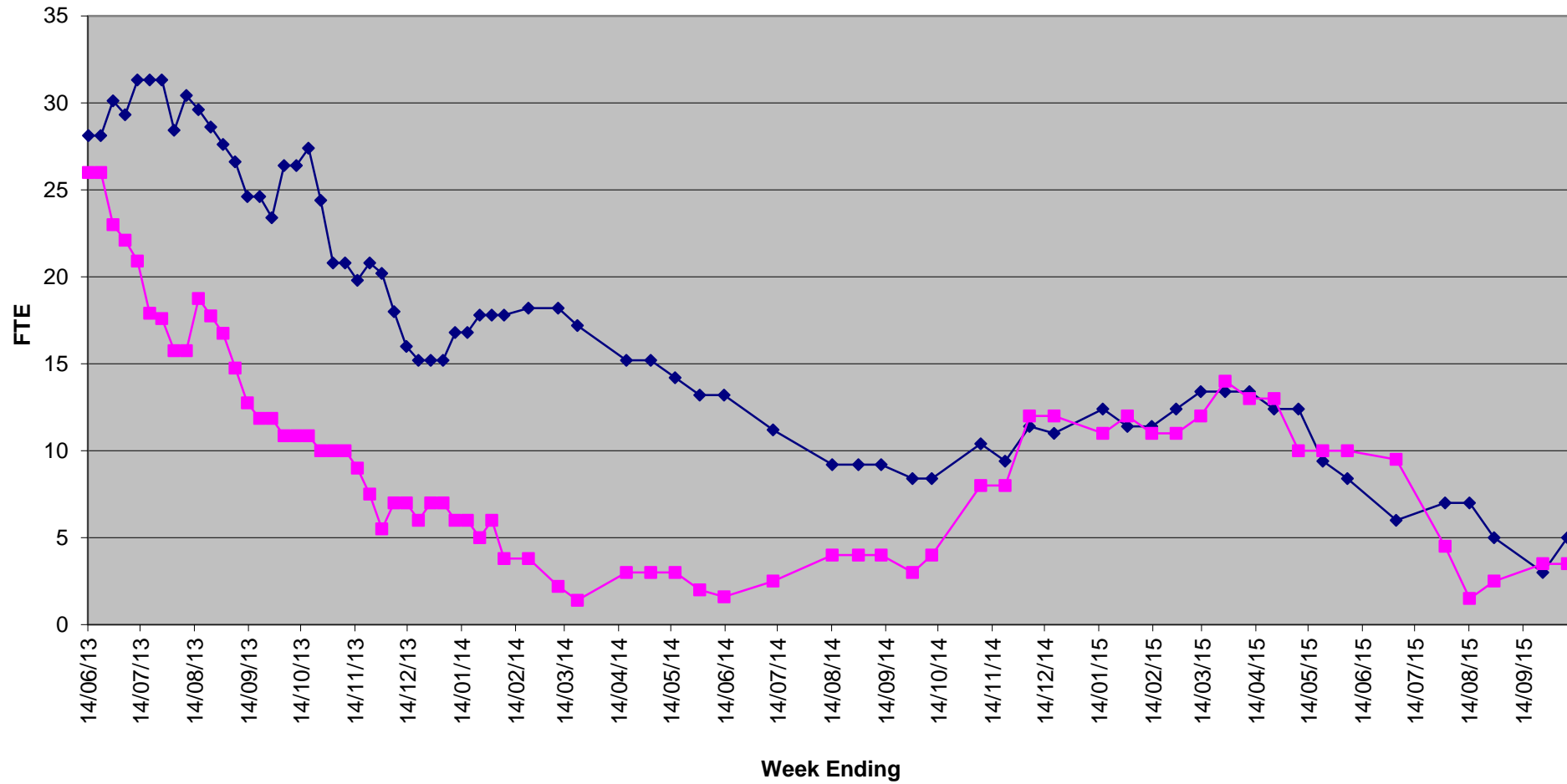


Agency Numbers (diamond) and Net Vacancies (square) June 2013 to October 2015



Summary of Agency Staff and Vacancies By Week

Week ending	Agency Staff	Net Vacancies	Comments
14/06/13	28.12	26	
21/06/13	28.12	26	
28/06/13	30.12	23	
05/07/13	29.32	22.1	
12/07/13	31.32	20.9	
19/07/13	31.32	17.9	
26/07/13	31.32	17.6	
02/08/13	28.42	15.75	
09/08/13	30.42	15.75	
16/08/13	29.61	18.75	
23/08/13	28.61	17.75	
30/08/13	27.61	16.75	
06/09/13	26.61	14.75	
13/09/13	24.61	12.75	
20/09/13	24.61	11.85	
27/09/13	23.4	11.85	
04/10/13	26.4	10.85	
11/10/13	26.4	10.85	
18/10/13	27.4	10.85	
25/10/13	24.4	10	
01/11/13	20.8	10	
08/11/13	20.8	10	
15/11/13	19.8	9	
22/11/13	20.8	7.5	
29/11/13	20.2	5.5	
06/12/13	18	7	
13/12/13	16	7	
20/12/13	15.2	6	
27/12/13	15.2	7	
03/01/14	15.2	7	
10/01/14	16.8	6	
17/01/14	16.8	6	
24/01/14	17.8	5	
31/01/14	17.8	6	
07/02/14	17.8	3.8	
21/02/14	18.2	3.8	
10/03/14	18.2	2.2	
21/03/14	17.2	1.4	
18/04/14	15.2	3	
02/05/14	15.2	3	
16/05/14	14.2	3	
30/05/14	13.2	2	
13/06/14	13.2	1.6	
11/07/14	11.2	2.5	
14/08/14	9.2	4	
29/08/14	9.2	4	
11/09/14	9.2	4	
29/09/14	8.4	3	
10/10/14	8.4	4	

07/11/14	10.4	8	
21/11/14	9.4	8	
05/12/14	11.4	12	
19/12/14	11	12	
16/01/15	12.4	11	
30/01/15	11.4	12	
13/02/15	11.4	11	
27/02/15	12.4	11	
13/03/15	13.4	12	
27/03/15	13.4	14	
10/04/15	13.4	13	
24/04/15	12.4	13	
08/05/15	12.4	10	
22/05/15	9.4	10	
05/06/15	8.4	10	
03/07/15	6	9.5	
31/07/15	7	4.5	
14/08/15	7	1.5	
28/08/15	5	2.5	
25/09/15	3	3.5	
09/10/15	5	3.5	

Note

Net vacancies = Number of vacancies less post accepted with start dates